

WELDING TORCHES  
FOR ROBOTIC SYSTEMS



WOS

# WITHOUT STOPS

The only torch in the world capable of detecting torch breakdown before it happens



PRODUCTIVITY

**PATENTED**

INTRODUCTION  
WOS SYSTEM

PRODUCTION



With the new Ergodani patented "WITHOUT STOPS" system, nothing can stop your production

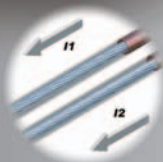
# WELDING TORCHES FOR ROBOTIC SYSTEMS



## WOS



**PATENTED**



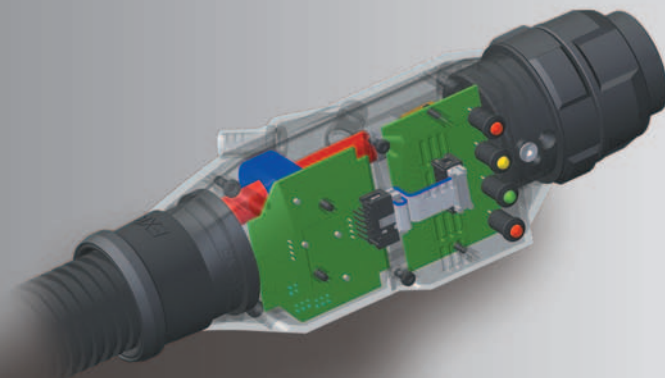
ON  
CORRECT



I1 I2  
ALARM 2



°C  
ALARM 1



This is a revolutionary system which relates torch temperature and the current parameters, warning you of any abnormal damage to any of its electric parts, allowing for you repair or change once work is finished thereby avoiding unwanted interruption of its normal function.

# WELDING TORCHES FOR ROBOTIC SYSTEMS



## TORCHES EXR

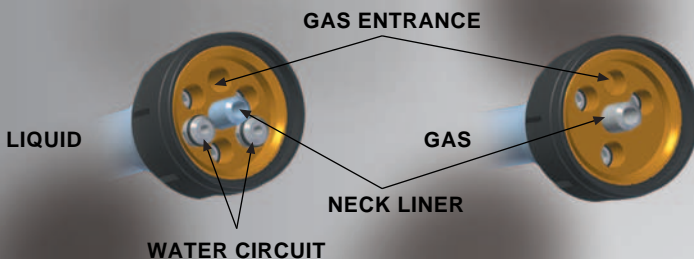
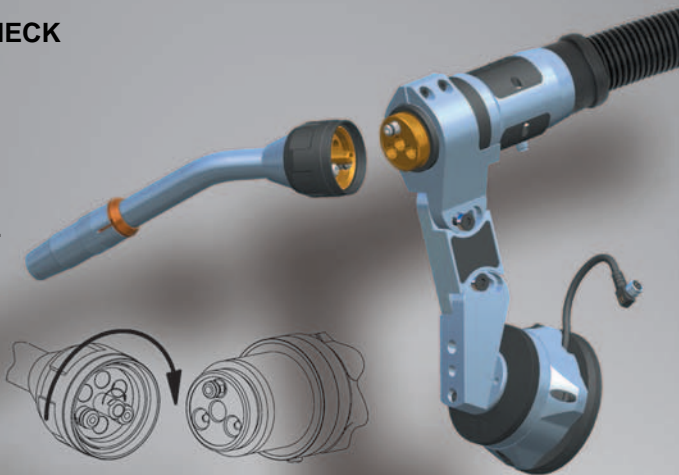
### SUBJECTION SYSTEM INTERCHANGEABLE NECK

EXCHANGE SYSTEM OF  
THREADED NECK.

VALVES FOR WATER EXIT  
INDEPENDENT LINER.

SIRGA INDEPENDIENTE  
EN LA ZONA DEL CUELLO.

IN THE NECK ZONE  
STAINLESS STEEL  
EXTERNAL CASING.  
GOOD RESISTENCE  
TO THE DEFORMATION.



SPECIAL ANTI-WEAR  
ALLOY AND HIGH  
THERMICAL TRANSMISSION

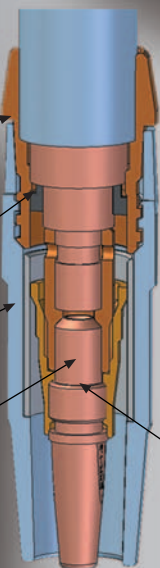
EXTERNAL LIQUID  
CIRCUIT

SQUARE THREAD

INTERNAL LIQUID  
CIRCUIT

IMPROVEMENT IN THE NECK  
COOLING SYSTEM

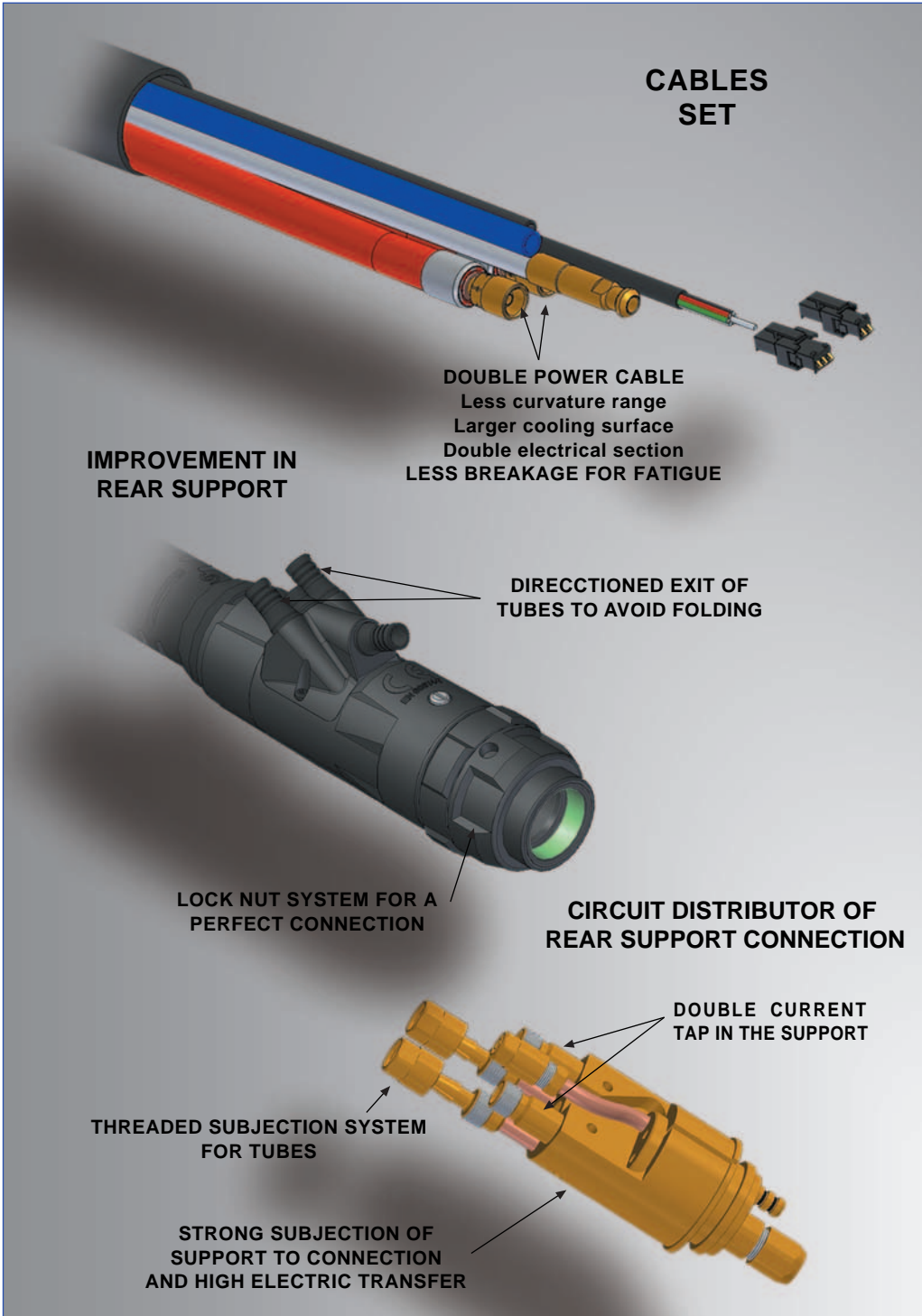
SPECIAL COOLING TIP  
"COLD PRESSURE"



# WELDING TORCHES FOR ROBOTIC SYSTEMS



## TORCHES EXR



# WELDING TORCHES FOR ROBOTIC SYSTEMS

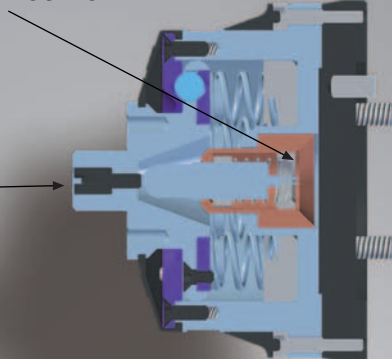


## TORCHES EXR

### SENSOR ANTI-COLLISION POSITION



### SENSOR POSITION

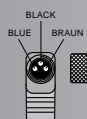


REGULATION  
OF PRECISION

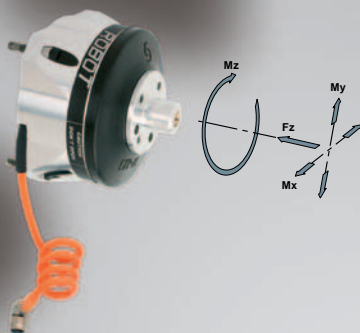


200 mm

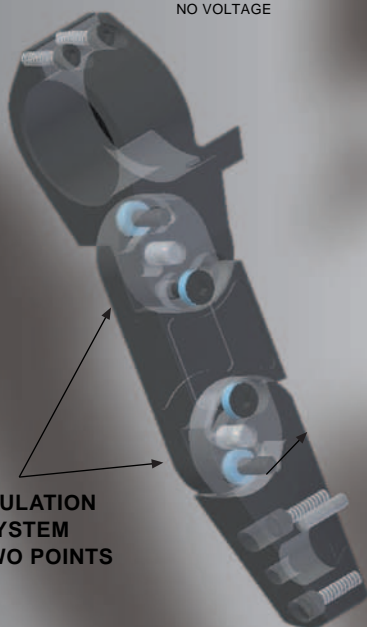
4±0.02



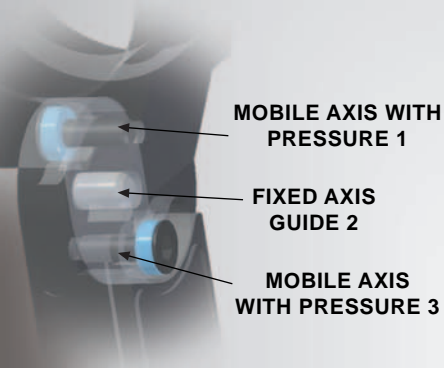
- LED A and B in ON  
NO COLLISION
- LED A or B in ON  
IN COLLISION
- LED A and B in OFF  
NO VOLTAGE



### REGULATION SYSTEM OF THREE AXES EXR



REGULATION  
SYSTEM  
OF TWO POINTS

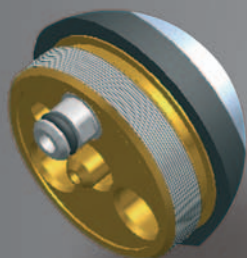


- MOBILE AXIS WITH  
PRESSURE 1
- FIXED AXIS  
GUIDE 2
- MOBILE AXIS  
WITH PRESSURE 3

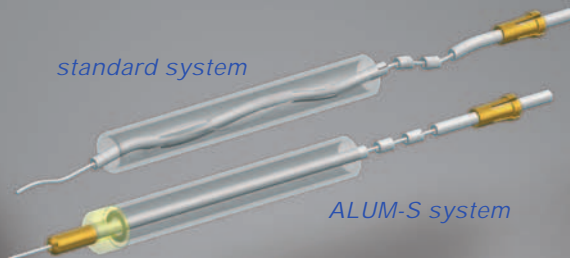
# WELDING TORCHES FOR ROBOTIC SYSTEMS



## TORCHES EXR



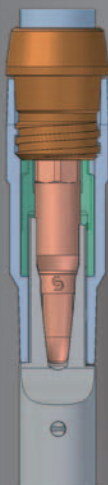
*standard system*



*ALUM-S system*

### *New ALUM-S (Aluminium-Slider) system*

This system has been specially designed to improve the sliding of the aluminium wire through the interior of the guidance system, reducing the unnecessary undulations present in conventional systems. This gives rise to fewer friction points on the wire guidance conduit, reducing total friction and the number of jams.



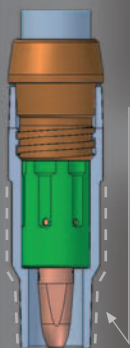
### *ICS (Integrated Cleaning System)*

This system enables the complete elimination of spatter build-up on weldings prone to spatter.

Protected and easy-to-clean fastening and gas vent systems.

High-level of refrigeration reducing gas consumption.

Auto-adjustable length of milling entry point.



Exterior piping of gas diffusers. This improves the refrigeration of the nozzle, makes gas diffusers easier to clean and prevent spatter build-up from occurring.

Exterior surface is insulated, preventing build-up from occurring and nozzle short-circuits.

# WELDING TORCHES FOR ROBOTIC SYSTEMS

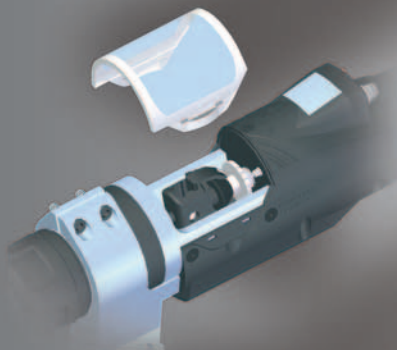


## PUSH-PULL EXR



### *PVS (Peripheral Vision System)*

This enables real-time visual checking of the correct functioning of the motor.



**More thrust and less wire deformation** thanks to its extremely precise orbital system. The upper casing can be removed manually for roller adjustment and wire replacement.



**Connections are protected** from the line of movement of the arm as it interacts with the welding peripherals.



**Completely modular system** with easily removed parts for repair or replacement and compatible with all models from the EXR range.